

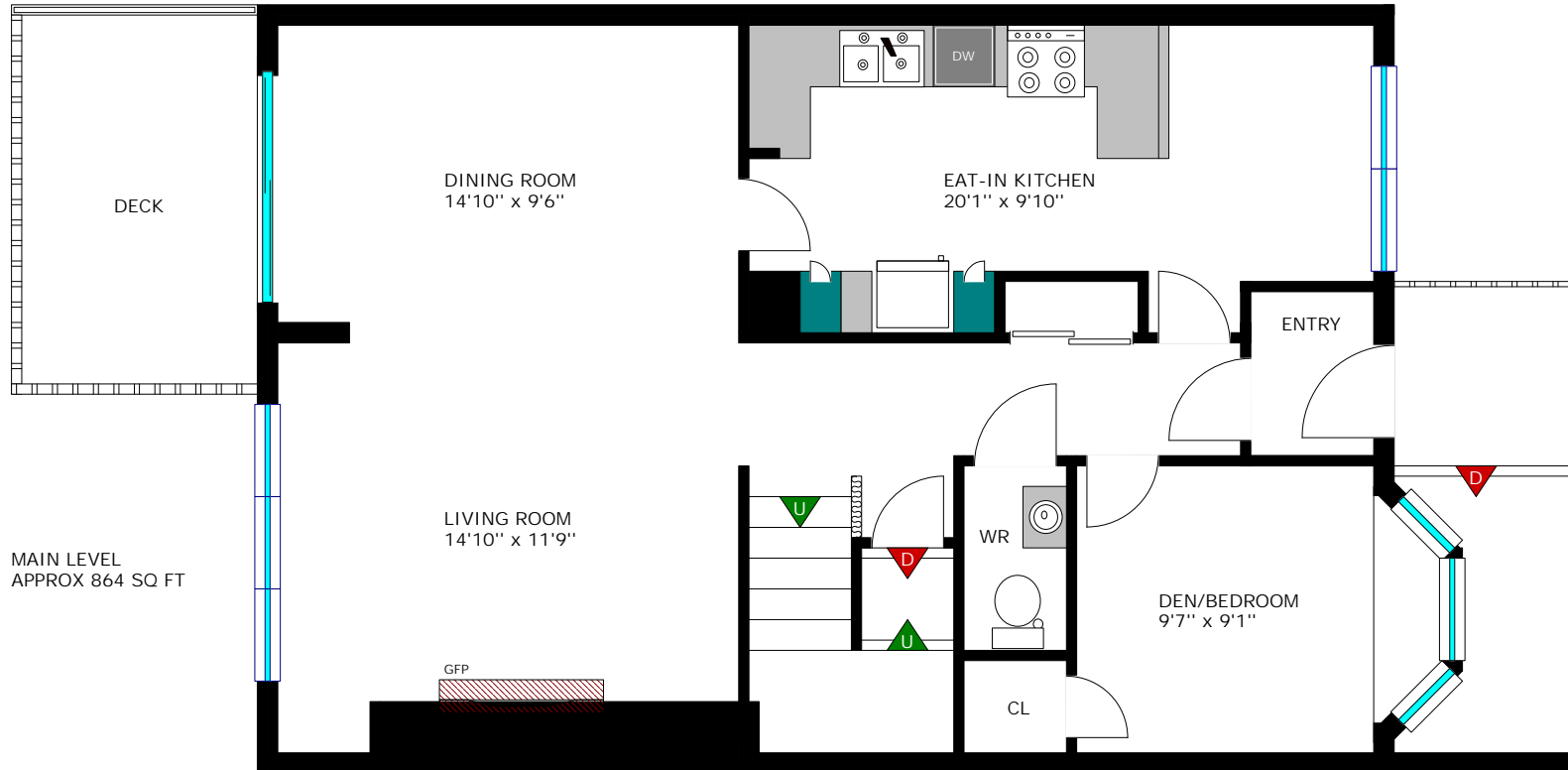
32 Country Club Place, Brockville

Last Revised: 2024-06-14

Page 1 of 4

Debra Lynn Currier

Broker



www.realtyservices.ca

Floor plan measurements and square footage are approximate, and drawings are for illustrative purposes only. We make no guarantee or warranty as to the accuracy and completeness of the floor plan. Please be sure to conduct an independent investigation of the property to determine the suitability for your space requirements.

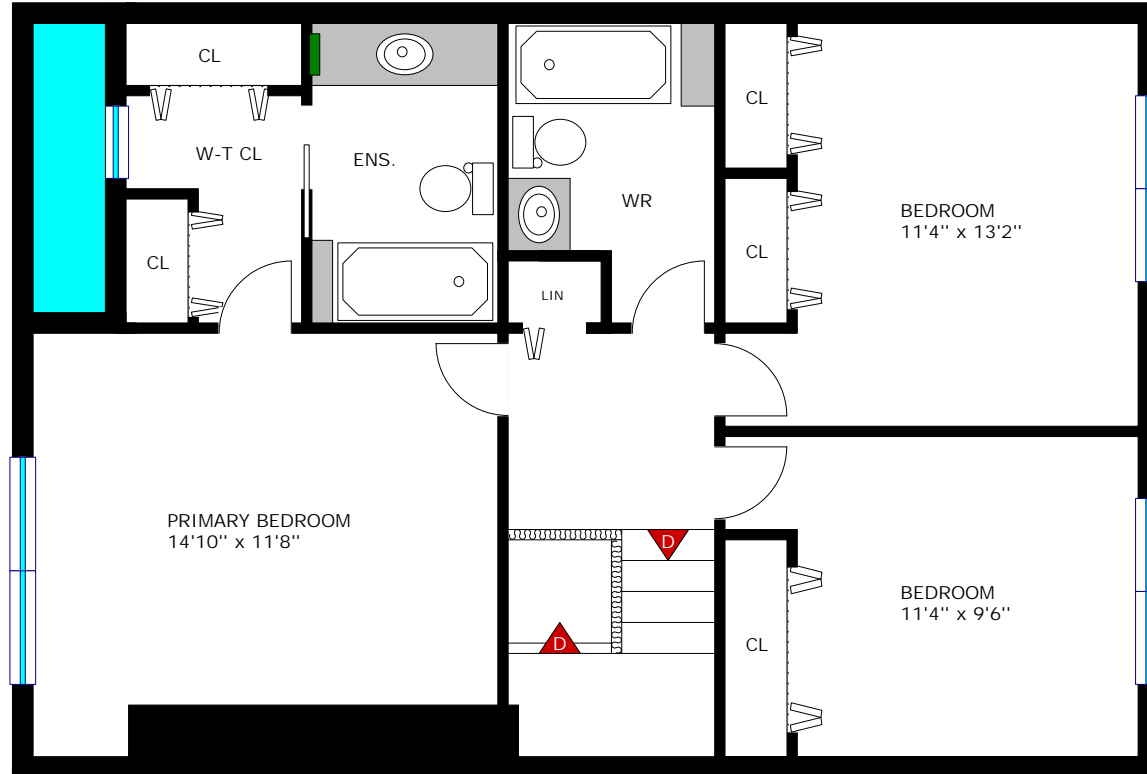
32 Country Club Place, Brockville

Last Revised: 2024-06-14

Page 2 of 4

Debra Lynn Currier

Broker



www.realtyservices.ca

Floor plan measurements and square footage are approximate, and drawings are for illustrative purposes only. We make no guarantee or warranty as to the accuracy and completeness of the floor plan. Please be sure to conduct an independent investigation of the property to determine the suitability for your space requirements.

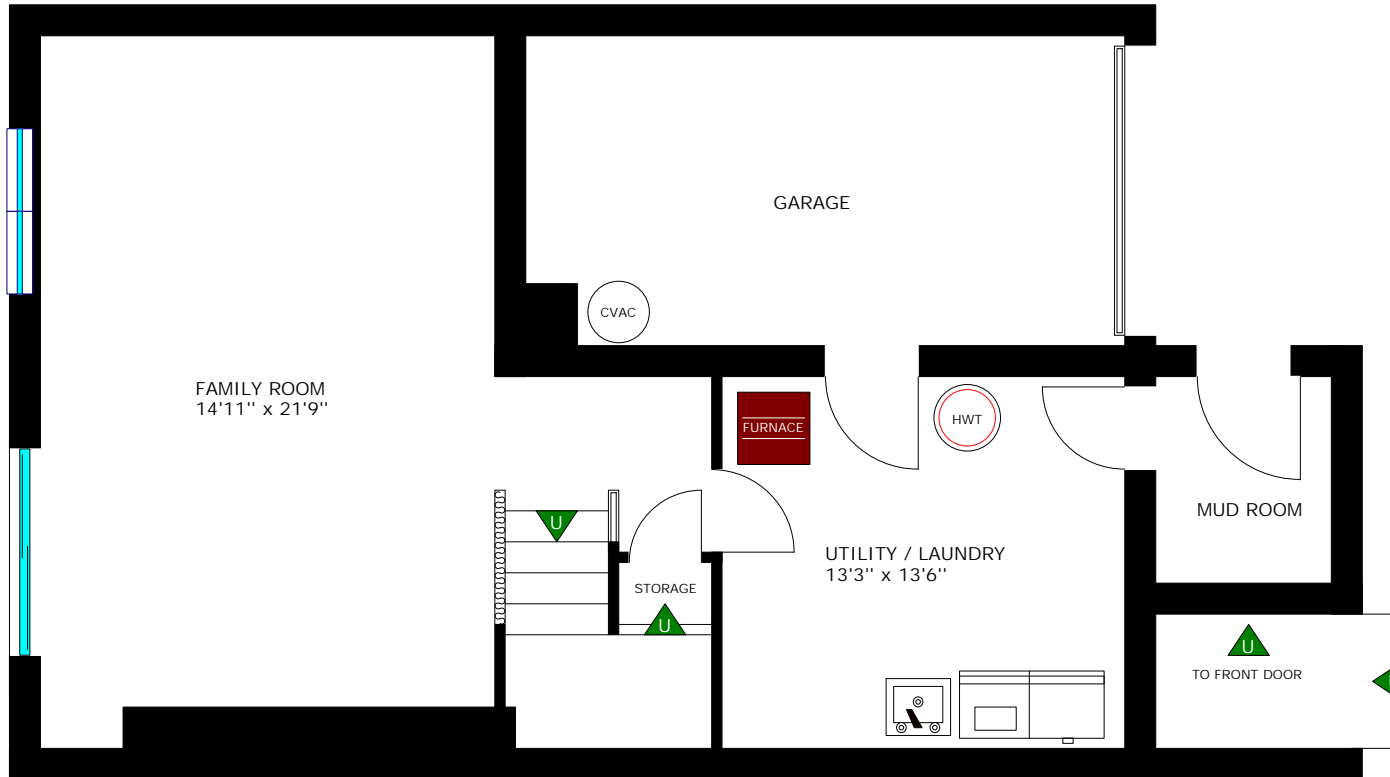
32 Country Club Place, Brockville

Last Revised: 2024-06-14

Page 3 of 4

Debra Lynn Currier

Broker



www.realtyservices.ca

Floor plan measurements and square footage are approximate, and drawings are for illustrative purposes only. We make no guarantee or warranty as to the accuracy and completeness of the floor plan. Please be sure to conduct an independent investigation of the property to determine the suitability for your space requirements.



Room Measurements

LEVEL	ROOM / AREA	IMPERIAL	METRIC (Metres)
MAIN	Entry	3'11" x 5'4"	1.19 x 1.63
	Living Room	14'10" x 11'9"	4.52 x 3.58
	Dining Room	14'10" x 9'6"	4.52 x 2.90
	Eat-In Kitchen	20'1" x 9'10"	6.12 x 3.00
	2-Pc Bath	3'5" x 6'1"	1.04 x 1.85
SECOND	Primary Bedroom	14'10" x 11'8"	4.52 x 3.56
	+ Walk-Through Closet	5'5" x 9'11"	1.65 x 3.02
	+ 4-Pc Ensuite	5'11" x 9'11"	1.80 x 3.02
	Bedroom	11'4" x 13'2"	3.45 x 4.01
	Bedroom	11'4" x 9'6"	3.45 x 2.90
	4-Pc Bath	6'0" x 7'7"	1.83 x 2.31
LOWER	Family Room	14'11" x 21'9"	4.55 x 6.63
	Utility / Laundry	13'3" x 13'6"	4.04 x 4.11
	Mud Room	5'0" x 6'0"	1.52 x 1.83
OTHER	Garage	19'6" x 10'0"	5.94 x 3.05
	Deck	8'0" x 12'8"	2.44 x 3.86

